


Historic, Archive Document

Do not assume content reflects current scientific knowledge, policies, or practices.

12703

Gladiolus
Dahlias
Peonies


1928


Grown and Offered by

J. V. EDLUND

TWELFTH ST. AND DIVISION AVE.

WHITE BEAR LAKE,

MINNESOTA

— 1928 —

RECEIVED
MAY 5 1928

It is with great pleasure that we once more send you our annual list of Gladiolus, Peonies and Dahlias and take this means of expressing to you our appreciation of your patronage, both in the past and for the future.

Our ambition is to grow the finest of these flowers that can be acquired and to send out the finest stock that can be grown.

We spare neither time or labor in raising our crop. Should you favor us with your orders you may feel confident that you are buying the best stock obtainable.

We extend to you a cordial invitation to visit our gardens any time during the blooming season, which is from June 1st, until heavy frosts.

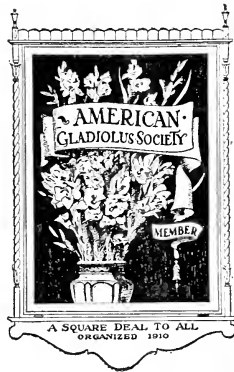
Sincerely yours,

J. V. EDLUND,

12th St. and Division Ave.,

White Bear Lake, Minn.

Member of
American Gladiolus Society.
American Peony Society



GENERAL INFORMATION

We are always glad to give information or answer questions of any kind.

Order early, as the stocks of some of our finest varieties are limited. Early orders are solicited to prevent disappointments in case the varieties selected should be sold out.

Discounts. On all orders received before March 1st, 1928, amounting to \$2.00 or more, we will allow extra bulbs, your selection equal to 10% of the order. No orders accepted after May 1st.

We do not substitute unless directed to do so.

Terms—Net cash before shipment, 25% deposit will hold your order until March 1st. Orders not fully paid will be sent C. O. D. for the balance.

Please Use Attached Order Blank at End of this Booklet

ANNOUNCEMENT

In 1928 this bank will hold its Eighth Annual Peony Show in the Bank lobby. The Third Annual "Glad" Show will also be held by the bank at a time when these blossoms are at their best.

While the Bank undoubtedly receives considerable desirable publicity as a result of these exhibitions, this is by no means the only reason such shows are undertaken.

We believe we are helping to make St. Paul a more beautiful city, and by holding flower shows and offering prizes for the best exhibits we are encouraging home owners in the work of improving their yards.

In 1921, the year of our first Peony Show, very few took part in the competition for prizes. We have noted with a great deal of pride how the exhibits have grown from a very few to hundreds. At our last show the lobby of the bank was taxed to capacity with exhibits which would indicate that each year more and more people are becoming interested in the growing of flowers.

With very few exceptions, it will be found that the home that has a carefully planned flower garden and well kept grounds, is a substantial and thrifty home from which radiates happiness and contentment. That is the kind of a home that is an asset to any city and the business interests that serve it.

The First National Bank of Saint Paul

Saint Paul, Minnesota

Remittance may be made by post-office order, bank-draft, express money order or personal check.

We pay postage on all orders of \$1.00 or more; of less amounts add 25 cents to cover postage.

Six bulbs sold at the dozen rate.

At prices quoted $\frac{1}{2}$ size Gladiolus bulbs will be sold at $\frac{1}{2}$ price, where the price is 20c or more.

In comparing prices please bear in mind that quality bulbs and tubers can not be produced and sold at cut rate prices.

Wholesale orders. We are in a position to accept wholesale orders on quantity lots of many varieties listed. If interested write for quotations.

OUR GUARANTEE

Every bulb offered is absolutely true to name and up to size. We consider a bulb $1\frac{1}{4}$ inches in diameter a good blooming size.

If for any reason you are dissatisfied with the stock, when received, return it and your money will be refunded.

Reference:

FIRST NATIONAL BANK,
White Bear Lake, Minn.

How to Grow Gladioli

Plant the bulbs in well-worked soil 4 to 6 inches deep. Deep planting will serve to protect the roots from the hot sun, keeping more moisture about the roots, and also serves to hold up the heavy spike after it has grown to its full height.

The Gladiolus will thrive in almost any good garden soil, but seems best results are obtained in soils that are more or less sandy. Plant in a sunny location away from trees and large shrubs. The first planting may be made in the spring as soon as the ground is warm and in good workable condition. If a succession of blooms are desired throughout the summer, new plantings may be made about 10 days after the foliage of the previous planting show through the ground and additional plantings continued until the last week in June, which is about as late as is safe to make the last planting in order to secure flowers before frost.

After planting, broadcast five pounds to per hundred square feet over the surface a 2-16-8 Commercial fertilizer and rake well into the soil.

Cultivate often and thoroughly; the more you cultivate the better they grow. Do not allow the ground to bake around the plants. The bulbs should be dug before the plants are too ripe and before hard frosts. Dig the bulbs and cut off the tops close to the bulb. Dry well in the open air and sunshine, then put in dry airy place for two or three weeks to cure. Be sure to protect against frost. As soon as well dried the old bulbs, bulblets and roots can easily be removed.

Put bulbs in trays not over four inches deep. Store in cellar or basement where the temperature is uniform and around 40 to 45 degrees.

FOR CUT FLOWERS

Cut spike when first bud opens, leaving at least four or five leaves on stalk to mature the bulb. Place in water and change the water each day, at the same time cutting a little off the end of stem. Placing flowers in cellar at night will add to the life of the bloom.

MINNESOTA GROWN

Minnesota grown bulbs are conceded to be the best produced anywhere, because of the climatic conditions which tend to develop a much firmer, healthier bulb than those grown under warmer and more humid climatic conditions.

At the Minnesota State Fair each year visitors are always attracted by our display of Gladiolus, where in 1927 we received twenty-one first premiums in the different classes.

TO OUR TWIN CITIES CUSTOMERS

If it is more convenient you may leave your orders with Donaldson's Flower Department, Minneapolis, or The Golden Rule Flower Shop, St. Paul, where they may be charged to your regular accounts, if you so desire.

The Gladiolus

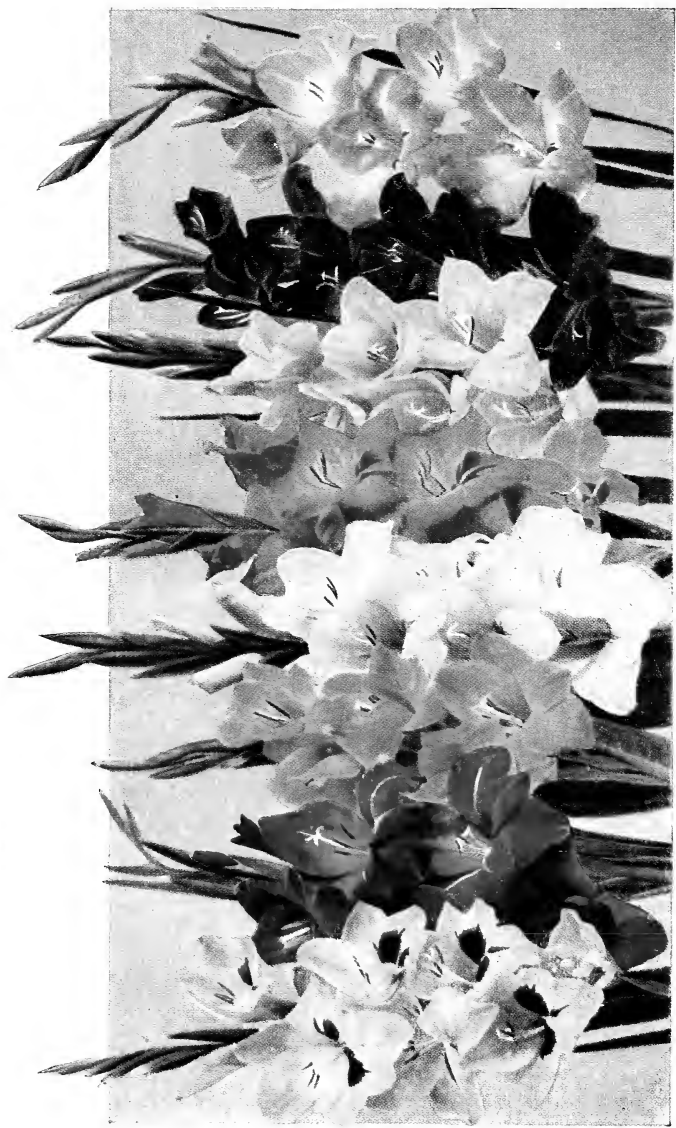
- ADORATION** (Kunderd)—A very large grand saffron or lincoln red. Deeper in the throat. A grand, rare and beautiful self-color.....Each 25c; Doz. \$2.50
- AGATHA** (Kunderd)—Deep peach blossom pink. A grand variety.
Each ½ size, each 25c; Doz. \$2.50
- ALTON** (Kunderd)—A wonderfully ruffled variety of finest orange color.
A magnificent gladiolus.....Each 25c; Doz. \$2.50
- ANNA EBERIUS** (Diener)—A wonderful dark velvety purple red of distinctive color. Large flowers and vigorous grower.....Each 15c; Doz. \$1.50
- ANTHONY B. KUNDERD** (Kunderd)—Tall, large, intensely ruffled flower of delicate deep cream color. Overspreading finest blush pink. Entire lower petals beautiful primrose cream flushed pink at edges.....Each 20c; Doz. \$2.00
- ARDMORE** (Kunderd)—A grand white with a lavender blotch; a very tall, erect grower.....Each 15c; Doz. \$1.50
- BALTIMORE**—A beautiful waxy salmon-pink with a large maroon blotch on lower petals, and very large open flowers.....Each 15c; Doz. \$1.50
- BARON J. HULOT** (Lemoine)—Dark violet. Commonly referred to as the best dark blue. Flowers rather small, but it is still one of the best of its color.....Each 10c; Doz. \$1.00
- BEATRIZ MICHELENA** (Diener)—Peach red overlaid with fiery orange. A thin ruby stripe through lower petals surrounded with white speckles. Large flowers, many opening at once and of lasting quality. This variety is perfect in every detail and a masterpiece in gladioli.....Each 75c; Doz. \$7.50
- BENGAL TIGER** (Pratt)—A brilliant mottled red of great beauty. An Oriental color hard to describe. Wide open blooms, tall erect grower.
Each 20c; Doz. \$2.00
- BLASCO IBANEZ** (Diener)—Very deep dahlia purple with a lighter stripe through the upper petals. Very large size. An extra fine variety.
Each 75c; Doz. \$7.50
- BLUSHING BEAUTY** (Kunderd)—Opening buds blush pink, flowers softest blush with dainty pink throat lines, many open. A real dainty variety.
Each 20c; Doz. \$2.00
- BREAK O' DAY** (Bill)—One of the finest Glads we have ever seen. Massive spikes with several flowers opening at a time. Color is a soft La France pink; the pink is flushed over a cream ground and the shade is deeper at tips of petals. There is a zone of martius yellow on lower petals with delicate central lines of brazil red—½ size bulbs.....Each 75c; Doz. \$7.50
- BYRON L. SMITH** (Kunderd)—One of the very best. Most refined lavender pink on white ground. Exceptionally fine as a cut flower. Color equal to a very choice cattleya orchid.....Each 15c; Doz. \$1.50
- CAPTAIN BOYNTON** (Boynton)—Beautiful pale lavender with deeper blotch on lower petals, perfectly placed flowers on tall strong stem; very choice.....Each 35c; Doz. \$3.50
- CARMEN SYLVIA** (Prestgard)—Pure snow-white, throat slightly penciled lilac, almost self. Stem tall, slender and wiry, always straight.
Each 15c; Doz. \$1.50
- CHALICE FLOWER** (Kunderd)—A tall beautiful plant with a refined and elegant flower. Flowers large and plenty open at a time. Cup or roundish formed, suggestive of its name. Color a light creamy blush white of pleasing effect.....Each \$1.00; Doz. \$10.00
- CHALLENGER** (Kunderd)—A very large and vigorous plant. Giant, dark rich velvety red, solid color. An extraordinary fine variety.
Each 15c; Doz. \$1.50

- CHAS. FAIRBANKS** (Kunderd)—Another red, but a distinctive variety named in honor of a recent President of the American Gladiolus Society. Flowers are large size.....Each 25c; Doz. \$2.50
- CARDINAL PRINCE** (Kunderd)—A magnificent self-colored cardinal. Flowers large and of splendid form and placement, six to eight open at a time. A good tall plant. An A-1 cardinal, perhaps superior to any other variety in this color. Destined to become very popular.....Each \$1.00; Doz. \$10.00
- CRIMSON GLOW** (Betcher)—Extra large flowers, tall, spike of a brilliant crimson.....Each 15c; Doz. \$1.50
- CRINKLES** (Kunderd)—Deep peach blossom pink. Intensely ruffled.....Each 35c; Doz. \$3.50
- DR. CHRIST MARTZ** (Kunderd)—A large and beautiful flower of light blood red. A very showy ruffled variety.....Each \$1.00; Doz. \$10.00
- DR. ELKINS** (Kunderd)—A true sport of Mrs. F. Pendleton. Same large and showy flower, but the original rose pink has changed to a white and the large throat blotches to a fine shade of lilac blue.....Each 25c; Doz. \$2.50
- DR. F. E. BENNETT** (Diener)—Deep peach red overlaid with flame scarlet. Lip speckled ruby and white. Most fiery red imaginable. Flowers of the very largest size with many opening at once. Exceptionally well placed on the stem. Most perfect red we have ever seen.....Each 50c; Doz. \$5.00
- DIANA** (C. Zeestraten)—Wonderful shade of deep rich mellow blood red. This variety has every good quality that goes toward making a high-grade Gladiolus.....Each 10c; Doz. \$1.00
- DIENERS AMERICAN BEAUTY** (Diener)—Brilliant American Beauty color. Throat creamy yellow striped with ruby. One spike opening a large number of flowers at one time forms an immense bouquet. Flowers very large.Each 25c; Doz. \$2.50
- DIENERS WHITE** (Diener)—Milk white with a faint tinge of pink in throat: flowers very large and a very tall erect grower.....Each 25c; Doz. \$2.50
- DR. J. H. NEELEY** (Kunderd)—Tall, massive plant. Very large and refined flower of finest pink blush white. Throat clear and clean, pure soft white. tinted softest light canary yellow or cream.....Each 25c; Doz. \$2.50
- DR. W. VAN FLEET** (Kunderd)—A very tall and slender plant; flowers of remarkable form and large size. A magnificent shade of delicate rose pink, deeper at edges of all petals. Throat of softest canary yellow or cream tint beautifully blended.....Each 15c; Doz. \$1.50
- DUCHESS OF YORK** (Dames)—Large flowers of a beautiful purple blue color. Erect stems, vigorous growth and firm substance of flower. Extra fine for a dark blue.....Each 35c; Doz. \$3.50
- EARLY SUNRISE** (Velthuys)—This beautiful gladiolus has the colors of a sunrise before a storm. The blooms are large, wide open and very handsome.....Each 20c; Doz. \$2.00
- E. J. SHAYLOR** (Kunderd)—A beautiful, pure, deep rose pink large blooms extra choice.....Each 10c; Doz. \$1.00
- ELF** (Diener)—Lemon yellow buds, opening into snow-white flowers with lemon yellow lip. Perfect spike.....Each 15c; Doz. \$1.50
- ELIZABETH TABOR** (Hinkle)—Flowers are very large, and even under ordinary cultivation often reach six inches in width; petals are delicate rosy pink on white ground, lower ones bearing a rich dark crimson blotch which terminates in a diamond of soft yellow. Grows tall, but rarely has a crooked stalk.....Each 20c; Doz. \$2.00
- ENIGMA** (Kunderd)—Tall plant with large flowers. Strikingly striped red, white and blue, is all that the name implies. ½ size.....Each 25c; Doz. \$2.50
- EVELYN KIRTLAND** (Austin)—Beautiful shade of rose pink, darker at the edges, fading to a shell pink at the center with a brilliant scarlet blotch on lower petals. Tall straight spike.....Each 15c; Doz. \$1.50

- FERN KYLE** (Kunderd)—Large ruffled flower of finest creamy white color.
Each 50c; Doz. \$5.00
- GERALDINE FARRAR** (Diener)—Pale lavender; violet with deep violet spot on the lip. Unlike other blue varieties. The growth is very strong and vigorous. This variety has made a big impression on all visitors to this place..... Each \$2.00
- GLENDALE** (Davis)—A little darker than American Beauty rose. Unusually good on account of its strength and long keeping qualities. Each 15c; Doz. \$1.50
- GIANT MYRTLE** (Kunderd)—Much larger, showier, softer pink than myrtle. In a class with Mrs. Dr. Norton..... Each 25c; Doz. \$2.50
- GIANT NYMPH** (Coleman)—La France pink, with creamy yellow throat; very large wide-open flowers, long spike and flowers well arranged on the stems. This is one of the very best..... Each 30c; Doz. \$3.00
- GLADIS PLATH** (Diener)—Orchid flowering; lilac and red blotches. Flowers very large, with large, tall spikes..... Each 35c; Doz. \$3.50
- GLORIANA** (Betcher)—Rich salmon with creamy blotch, many open. Extra strong grower. New..... Each \$1.50
- GOLD** (Hoeg)—Pure golden yellow, throat a shade deeper, slightly dotted and streaked, almost self color. Large flowers; many open at one time and perfectly placed..... Each 20c; Doz. \$2.00
- GOLD EAGLE** (Austin)—A new yellow, the blooms which are of good size, beautifully ruffled and of strong substance. A good early yellow..... Each \$2.00
- GOLDEN DREAM** (Groff)—This is the best deep clear yellow we have seen to date. A very strong, tall grower, a beautiful flower in every respect.
Each \$4.00
- GOLDEN FRILLS** (Kunderd)—A deep daffodil-yellow. Intensely ruffled, slight pink lines on lower petals; very choice..... Each \$3.00
- GOLDEN BUFF** (Kunderd)—Golden buff with yellow lower petals. Distinct and fine..... Each 15c; Doz. \$1.50
- GOLDEN GLORY** (Kunderd)—A large, richly colored yellow, with beautiful throat. A fine ruffled variety..... Each 20c; Doz. \$2.00
- GOLDEN MEASURE** (Kelway)—A large, fine solid color yellow, well formed flower spike. A very tall, strong plant..... Each 20c; Doz. \$2.00
- GOLDEN SWALLOW** (Austin)—A beautiful clear soft yellow with no throat markings. The petals are finely ruffled, giving the blooms an artistic affect, and the blooms are set close together on the spike..... Each 30c; Doz. \$3.00
- HAWAII** (Diener)—Rose pink fading into a lighter center. Lower petals of crimson outlined with white. Clean grower, elegant spikes; flowers are large Each 30c; Doz. \$3.00
- HENRY FORD** (Diener)—Very dark rhodamine purple shading into deeper tones near the center. Color very clear, like Anna Eberius, but much larger and clearer..... Each 35c; Doz. \$3.50
- HIGHLAND LADDIE** (Kunderd)—Large, massive and beautiful pink of a decided pleasing shade. A very choice kind..... Each 40c; Doz. \$4.00
- HUMMING BIRD** (Kunderd)—A deep rose with lavender sheen. Lower petals almost covered with beautiful blotches. Looks like an orchid.
Each 20c; Doz. \$2.00
- IWA** (Betscher)—Color is the richest salmon rose, lighter toward the center of the throat, with darker markings on the lower petals. A beautiful flower..... Each 75c; Doz. \$7.50
- J. A. CARBONE** (Diener)—Orange salmon, very iridescent, darker shading toward the outer edge of petals. Yellow center. Fine long well-built spikes..... Each 25c; Doz. \$2.50
- JACK LONDON** (Diener)—Light salmon with vermillion stripes.
Each 15c; Doz. \$1.50

- JACOBA VAN BEYREN** (Heemskerck)—A unique violet self-color on erect stem, many open at a time..... Each 25c; Doz. \$2.50
- JENNY LIND** (Hoeg)—Pure, soft apricot pink, throat pale yellow, the two colors blending to perfection. Many blooms open at one time. An exceedingly refined and attractive variety..... Each 25c; Doz. \$2.50
- JOHN T. PIRIE** (Kunderd)—An exceptionally colored variety and very beautiful. A sort of mahogany brown with remarkable yellow bordered dark mahogany brown throat. In a class by itself..... Each 40c; Doz. \$4.00
- KING OF THE BLUES** (Grullemans)—Deep purple blue without markings; ½ size bulbs..... Each 50c; Doz. \$5.00
- LACINATUS** (Kunderd)—Rose pink, long slender spikes. The new race of Gladiolus with lacinated petals..... Each 75c
- LILAC GLORY** (Kunderd)—Large flowers, many open. Soft lilac rose pink. Beautiful deeper lilac rose and pink throat..... Each 30c; Doz. \$3.00
- LILLIAN** (Kunderd)—Tall fine plant and foliage with many large blossoms open at a time. Flowers white with light pink penciling over all petals. Large and beautiful deep rose-pink blotches..... Each 25c; Doz. \$2.50
- LILY WHITE** (Kunderd)—Pure white. A vigorous tall grower; the individual flowers are not large, but it more than makes up for this in substance..... Each 10c; Doz. \$1.00
- LOS ANGELES** (Houdyshell)—The famous "cut and come again" Glad. The color a shrimp pink with orange throat. A very tall, strong grower, with many flowers open at one time..... Each 35c; Doz. \$3.50
- LOUISE** (Wright)—Beautiful orchid lavender with a blotch of deeper color in the center; flowers of immense size. Termed the queen of lavender Gladoli..... Each 15c; Doz. \$1.50
- LOVELINESS** (Van Konijnenburg)—Beautiful cream colored variety of good form and substance..... Each 15c; Doz. \$1.50
- MAGIC** (Kunderd)—Tall, finest lavender blue, rich purple blotches in the throat..... Each 10; Doz. \$1.00
- MAINE** (Vos)—Pure glistening white without a blemish except for very faint lavender featherings in throat. Tall, straight spikes. Flowers well open and of good substance..... Each 20c; Doz. \$2.00
- MARIE KUNDERD** (Kunderd)—This is a wonderful white, and very early. Purest white with an almost invisible soft pink line on lower petals. A grand ruffled white..... Each 20c; Doz. \$2.00
- MARIETTA** (Metzner)—A very large geranium pink with prominent velvety carmine blotch in throat. A very beautiful color combination. A much improved Baltimore..... Each 25c; Doz. \$2.50
- MARY FENNEL** (Kunderd)—Deep lilac, shading lighter, with a soft primrose yellow throat..... Each 10c; Doz. \$1.00
- MARY PICKFORD** (Kunderd)—An extraordinary flower and spike of most delicate creamy-white. Throat finest soft sulphur-yellow. Stem and calix also white..... Each 15c; Doz. \$1.50
- MASTERPIECE** (Kunderd)—A magnificent ruffled American Beauty rose color. Giant flower and plant. Extremely fine..... Each 30c; Doz. \$3.00
- MINUET** (Coleman)—Fine, tall, well-built strong erect grower, with lavender blooms well placed and faced..... Each \$3.00
- MAURICE FULD** (L. Mertin Gage)—Large, rich rose with a white throat..... Each \$1.00
- MISS MADISON** (Bovnton)—A large waxy clear light pink, many open flowers and a good reproducer..... Each 35c; Doz. \$3.50
- MISS U. S. A.** (Kunderd)—Daintiest bluish white. Very pure, refined and beautiful..... Each 15c; Doz. \$1.50
- MR. H. A. HYDE** (Diener)—Snow white with blush pink trace throughout. Fine built spikes. Excellent cut flower variety..... Each 30c; Doz. \$3.00

- MRS. A. E. KUNDERD (Kunderd)—Large flowered; tall; superbly formed white with slight tint of bluish pink..... Each 15c; Doz. \$1.50
- MRS. ARTHUR MEEKER (Kunderd)—A very fine, rich deep American Beauty rose color. An unusual flower..... Each 20c; Doz. \$2.00
- MRS. DR. NORTON (Kunderd)—Bright La France pink, shading to pure white in throat, with a creamy suffusion on lower petals. A grand variety.
Each 15c; Doz. \$1.50
- MRS. F. C. HORNBERER (Hornberger)—A beautiful pure white without markings. Tall erect grower. Many large open flowers at a time. The best white we have ever seen..... Each \$2.50
- MRS. F. C. PETERS (Fischer)—The color is a beautiful shade of rose lilac, with crimson blotch, bordered with white on lower petals resembling an orchid in color. Flowers are of large size and many open at a time on a strong, perfectly straight spike..... Each 20c; Doz. \$2.00
- MRS. FRANK PENDLETON (Kunderd)—One of the largest and most popular Gladiolus. Very large, delicate pink flowers with large blotch of blood red..... Each 10c; Doz. \$1.00
- MRS. J. K. ARMSBY (Diener)—Coral pink, delicately penciled with vermilion near the edges, throat cream, speckled with ruby; flows very large; many open at one time, and of lasting quality..... Each 50c; Doz. \$5.00
- MRS. H. E. BOTHIN (Diener)—Flesh salmon-pink with a scarlet center. A lovely color combination and heavily ruffled..... Each 25c; Doz. \$2.50
- MRS. JOHN R. WALSH (Diener)—Heavily ruffled, flesh pink with flame colored center and many open flowers at one time. A very strong grower with very large flowers..... Each 25c; Doz. \$2.50
- MRS. LEON DOUGLAS (Diener)—Ground color begonia rose, striped with flame and brilliant scarlet. Lip is pale lemon slightly speckled with ruby. The size of the flowers, we believe, is the largest in existence, and all are very open and well set on the long spikes. The spikes are extra long and have up to as many as seven side spikes on each main spike.
Each 50c; Doz. \$5.00
- MRS. P. W. SISSON (Coleman)—Extra fine new pink. A seedling of wondrous beauty and shown for the first time at the A. G. S. exhibition in New York city, August, 1924..... ½ size bulbs. Each \$1.50
- MRS. RICHARD LOHRMAN (Diener)—Creamy shell pink with yellow lip. A coloring rivaling the finest orchid. Flowers are very large and edges heavily ruffled. Long, sturdy spikes which sometimes kink.
Each 25c; Doz. \$2.50
- MURIEL (Velthuys)—Pale violet blue; orchard blue with purplish blue blotch on lower petals; large open flowers. Excellent substance and tall and straight grower..... Each 15c; Doz. \$1.50
- MR. W. H. PHIPPS (Diener)—La France pink overlaid with light rose salmon, lighter toward the center. Lower petals very faintly striped and speckled with ruby. Flowers enormous. A masterpiece in Gladioli.
Each, ½ size 50c
- OPALESCENT (Bill)—Very large, showy lavender pink, many flowers open at one time, of good substance on strong, straight stalks..... Each 25c; Doz. \$2.50
- ORANGE FLAME (Kunderd)—A wondrous glowing vermilion orange; very large blooms magnificently ruffled. Splendid plant and spike.
Each 50c; Doz. \$5.00
- ORANGE GLORY (Kunderd)—A grand orange color with lighter throat; heavily ruffled. A very rich and striking color..... Each 15c; Doz. \$1.50
- PARAMOUNT (Kunderd)—A wonderful blending of pink and cream. Similar to Mrs. Dr. Norton..... Each 50c; Doz. \$5.00
- PEACH ROSE (Kunderd)—An extra choice and distinct deep rose-pink of remarkable color and appearance. A very beautiful variety..... Each 25c; Doz. \$2.50



OUR COLOR COLLECTION OF GLADIOLUS

3 bulbs each, 8 varieties, not labeled - - - \$2.50

- PEARL OF CALIFORNIA** (Kingsley)—Strong upright grower of excellent quality with large well set blossoms on long straight stems, spike contains from 26 to 32 buds with 8 to 10 open at one time. The large flower is of the clearest, softest La France pink ever put in a Glad, blending to a rosy white throat. _____ ½ size bulbs. Each \$3.00
- PINK BEAUTY**—The earliest of all varieties. Deep rose-pink with small crimson blotch. A very tall grower. _____ Each 10c; Doz. \$1.00
- PINK CLOUD** (Kunderd)—A large, distinct showy ruffled variety. Usually seven to nine beautiful, soft rose-pink blossoms open at a time. A very beautiful deeper rose throat. _____ Each 50c; Doz. \$5.00
- PINK LILY** (Kunderd)—A magnificent ruffled rose-pink. _____ Each 15c; Doz. \$1.50
- PINK WONDER** (Kemp)—A light pink with yellow shadings at base of lower petals, overlaid with rose featherings. Very large, wide open flowers. _____ Each 15c; Doz. \$1.50
- POLA NEGRI** (Diener)—Apricot with yellow lip. Ruffled shading into old rose and salmon on the outer edges. One of the loveliest color combinations ever seen. Flowers on the spike sometimes come irregular. _____ Each 15c; Doz. \$1.50
- PROSERPINE** (Holland)—A light cerise solid color; very bright and showy flower. _____ Each 10c; Doz. \$1.00
- PURPLE GLORY** (Kunderd)—A giant ruffled flower, with a very heavy long spike. The color is an intense reddish purple; a most wonderful flower. _____ Each 25c; Doz. \$2.50
- PURPLE QUEEN** (Kunderd)—A deep violet purple beauty; throat darker. Medium ruffled. Very extra of this shade. _____ Each \$1.00; Doz. \$10.00
- RED CANNA** (Kunderd)—A dark blood red, solid color, and a very tall spike. Very much like war. _____ Each 10c; Doz. \$1.00
- RICHARD DIENER** (Diener)—Pure geranium pink with a slight sprinkling of ruby or creamy yellow center. Large flaring blossoms, rivaling an orchid in beauty. The acme of perfection in coloring. This variety has created a sensation wherever shown. _____ Each 35c; Doz. \$3.50
- ROSE ASH** (Diener)—Ashes of roses; a color that has attracted the attention of everyone who has seen it. Flowers very large and spike tall and strong, blooms well set on the spike. _____ Each 15c; Doz. \$1.50
- ROSE GLORY** (Kunderd)—A very large and ruffled variety; purest rose-pink color. Deeper in throat. Extra fine. _____ Each 20c; Doz. \$2.00
- RUBINI** (Heemshirk)—Large bright salmon scarlet, with white markings on lower petals. A very beautiful clear color; splendid grower. A fine variety. _____ Each 15c; Doz. \$1.50
- SANS PARIEL** (Vilmorin)—Apricot pink with white throat of remarkable purity. Large plant and flower. Imported from Paris. _____ Each 75c
- SCARLANO** (Kunderd)—Light, bright orange red, fine spike and flower finely ruffled. _____ Each 15c; Doz. \$1.50
- SHEILA** (Coleman)—Light coral-red, fading to flesh-pink in throat, with prim-rose blotch on lower petals with pomegranite-purple. A good early variety. _____ Each 15c; Doz. \$1.50
- SNOW BOY** (Kunderd)—Tall, pure white, often has only one blotch on lower petal. _____ Each 15c; Doz. \$1.50
- SULPHUR FRILLS** (Kunderd)—Tall, many medium sized flowers open at a time. Beautifully ruffled, of finest pure soft sulphur shade. A real wonder. _____ Each 50c; Doz. \$5.00
- THE PRESIDENT** (Kunderd)—So named because of its close resemblance to that very beautiful red canna of the same name. A very fine Gladiolus. _____ Each 35c; Doz. \$3.50

- THE ORCHID** (Sprague)—This is a most beautiful flower, with long narrow ruffled and lacinated petals. A single floret would readily be taken for a cattaleya orchid a few feet away. The ground color of very pale lavender flecked toward the edges and ends with lavender pink. The upper petal is usually incurved, partially concealing a touch of yellow in the throat crossed by two very narrow feathers of amaranth, four to five florets are open at one time and are gracefully placed on the spike.
 $\frac{1}{2}$ size bulbs. Each \$2.00
- TRIUMPHATOR** (Krelage & Son)—A very large light shade of red with just a faint dusting of white in throat. Immense large flower on a perfect spike. Tall and strong grower.....Each \$1.00; Doz. \$10.00
- TYCKO ZANG** (Austin)—A salmon pink with a white throat, faintly dotted deep cerise. Five inches and over in size. The spike is straight and tall, has broad heavy foliage and is a good propagator.....Each 75c; Doz. \$7.50
- TYRIAN BEAUTY** (Kunderd)—American Beauty, rose color, with dark markings on base of petal. A very tall and strong grower.....Each 15c; Doz. \$1.50
- VEILCHENBLAU** (Pfitzer)—Violet blue of a lovely blue shade, shading to a darker throat, well formed spike and strong grower for a variety of this color Each \$2.50
- VENTURA** (Kunderd)—A pure white, with a barred throat. A fine ruffled variety.....Each 15c; Doz. \$1.50
- VIOLET PERFECTION** (Holland)—Excellent large flowered, dark violet variety.....Each 15c; Doz. \$1.50
- VIOLET GLORY** (Kunderd)—Massive flower. Rich self-color, deep violet; deeper throat. A very strong grower, with long stiff stems, and slightly ruffled.....Each 20c; Doz. \$2.00
- WHITE DELIGHT** (Kunderd)—Softest flesh white, beautifully blotched creamy throat.....Each 25c; Doz. \$2.50
- WHITE GIANT** (Van Meerbeck)—Very large, pure glistening white. Each flower resembles a lily in size and shape.....Each 15c; Doz. \$1.50
- WHITE GLORY** (Kunderd)—A gorgeous pure white of exact size and type of Kunderdii Glory, with iris-blue throat.....Each 20c; Doz. \$2.00
- WHITE PIGEON** (Kunderd)—A most wonderful pure white. Very large blooms, six to eight open. A strong, healthy grower and rapid propagater. A winner of many awards.....Each 20c; Doz. \$2.00
- WHITE WONDER** (Kemp)—A large, pure white, softly tinted pink. Flowers are very large and on a tall straight stem.....Each 15c; Doz. \$1.50
- WILBRINCK** (Hopman)—Pale pink, upper petals slightly darker, one of the early bloomers.....Each 10c; Doz. \$1.00
- WILLIAM G. BADGER** (Metzner)—A delicate coral, edged with darker coral tones, throat pale yellow, sprinkled dark coral on lower petals. The flowers are of perfect placement, on spikes five feet high.....Each 50c; Doz. \$5.00
- WILLIS E. FRYER** (Kunderd)—Very large, massive violet, blending to rose in throat and broader at base of flower petals. A variety that attracts the attention of all who see it.....Each 20c; Doz. \$2.00
- YOUELL'S FAVORITE** (Kunderd)—Large flower and plant, striking rosy lavender pink. Conspicuous and fine. Ruffled.....Each 20c; Doz. \$2.00
- GLADIOLI IN MIXTURE**—For those who just want flowers, we have put up lots of 100 bulbs, ranging in size from one inch and up, containing twenty to twenty-five varieties. A grand collection for a beginner. Sold in lots of 100 only. Postpaid anywhere in the United States and Canada.....\$3.00

Primulinus Hybrids

- ALICE TIPLADY** (Kunderd)—A grand large Primulinus of most beautiful orange saffron color. Very choice.....Each 10c; Doz. \$1.00
- ALTAIR** (Kunderd)—Extra tall, light saffron salmon. A grand color. Each 10c; Doz. \$1.00
- ANGOLA** (Kunderd)—A fine salmon pink. A splendid cut flower variety. Each 10c; Doz. \$1.00
- ARDEN** (Kunderd)—Deep watermelon red. Tall, large flowered. Each 15c; Doz. \$1.50
- BUTTERBOY** (Kunderd)—An extra tall, strong plant and giant bulb. Large buttercup yellow flowers, nicely spaced on spike. A decidedly distinct and showy Primulinus variety of much merit.....Each 15c; Doz. \$1.50
- E. B. WILLIAMSON** (Kunderd)—Color a deep mellow purple or tyrian pink. An unusual color which attracts much attention. A rare color in the Gladiolus and very desirable for floral work.....Each 25c; Doz. \$2.50
- GOLD DROP** (Kunderd)—An extra large, pure, deep yellow, with beautiful red line on petals. Beautifully ruffled.....Each 20c; Doz. \$2.00
- JEWEL** (C. Zeetraten)—A beautiful salmon-pink with a clear golden throat. A large wide open flower that does not show the hooded form of the Primulinus type.....Each 15c; Doz. \$1.50
- LILAC OLD ROSE** (Kunderd)—Large blooms of lilac old rose color; strong plant of good height and from four to six of these beautiful blooms open at a time.....Each 20c; Doz. \$2.00
- MAIDEN'S BLUSH** (Gruellmans)—The finest pink Gladiolus of the Primulinus type. A strong grower, bearing medium to large flowers of a most exquisite shade of maiden's blush pink. A profuse bloomer. Splendid for forcing, very decorative for cutting.....Each 5c; Doz. 50c
- MING TOY** (Kunderd)—Very large flower of finest form. Tall plant. Showy buff yellow throat. A beauty.....Each 15c; Doz. \$1.50
- MYRA** (Kunderd)—A giant flowered hybrid. Deep salmon over yellow ground. Tall, slender stem. Yellow throat with pink lines.....Each 5c; Doz. 50c
- ORANGE QUEEN** (Pfitzer)—Copper orange. Large open flowers. The only Gladiolus of this shade to date.....Each 25c; Doz. \$2.50
- PRIMUMELLA** (Kunderd)—A grand ruffled butterfly, orchid-like flower. Each 15c; Doz. \$1.50
- ROSE LUISANTE** (Holland)—Most beautiful light pink, on creamv ground; lower petals lighter color. New.....Each 15c; Doz. \$1.50
- SALMON BEAUTY** (Kunderd)—A deep salmon, with a rich salmon yellow throat, with very large flowers.....Each 10c; Doz. \$1.00
- SHELL PINK** (Kunderd)—Large flowered, rose-pink with beautiful slightly mottled white throat. A very choice Prim.....Each 15c; Doz. \$1.50
- TAURUS** (Kunderd)—A beautiful Primulinus hybrid of a fine purple or violet color. Distinct, rare and fine.....Each 25c; Doz. \$2.50
- WHITE BUTTERFLY** (Kunderd)—A first-class all white with soft cream white throat. Fine slender stem and beautiful cut flower. Each 15c; Doz. \$1.50

Dahlias

Dahlias are easily grown, requiring no special soil or treatment to bring them to perfection. They like an open, sunny situation, but also succeed in partial afternoon shade.

Prepare the soil thoroughly by spading 12 to 18 inches deep, and if the soil is poor work in some 2-16-8 Commercial fertilizer about two weeks in advance of planting, about six or seven pounds to 100 square feet. Dig holes 3 or 4 feet apart and about 5 inches deep; drive a stout stake in each hole and lay the tuber down flat with the crown toward the stake and the eye upward, then cover with 2 or 3 inches of soil, leaving the balance of the hole to be filled up later, after the plant comes up.

Plant any time from May 15th to June 15th in this vicinity, the later date being the best for exhibition flowers.

To prevent the plant from growing too tall, they can be pinched back at the top when they have made their third set of leaves, this will make them branch and we think produce more blooms.

Allow only one plant to each stake. Tie plant securely to stake as it continues to grow. Cultivate at least once every week and after each rain until the buds appear, rake in the soil a handful of hardwood ashes if possible and mulch the ground with well-rotted manure or lawn clippings and water thoroughly whenever the plants need it.

Disbudding the side buds, leaving only the terminal bud to develop, will bring larger blossoms.

After the plants have been killed by hard frost they should be carefully dug, allowed to dry a few hours, and stored in a dry cellar tops down and with dry soil over them to keep from shriveling. We have the past two winters stored in boxes or barrels and covered them with dry pine sawdust with excellent results.

Our collection of Dahlias received some of the highest awards at the Minnesota State Fair, 1927.

-
- AMUN-RA (Seal)—A decorative of great size in the richest shades of coppery bronze. The stems are long and stiff, and the flowers keep splendidly. Each **\$1.00**
 - ALEX WALDIE (Decorative)—Creamy yellow overlaid with delicate salmon pink. Splendid form with good stems..... Each **\$1.00**
 - BALLET GIRL (Bessie Boston)—Cactus. This is one of the most striking dahlias in our gardens. Some of the flowers are orange edged white, others pure orange and still others a variation of white and orange all on the same plant. A splendid cut flower and there is no better for exhibition Each **\$1.50**
 - BASHFUL GIANT (Marean)—This is truly a giant for size, perhaps one of the largest Dahlias ever produced; it is also of great merit for its beautiful color, being an apricot with golden shadings. Flowers are held erect on stout stems..... Each **\$1.00**
 - CALIFORNIA ENCHANTRESS (Bessie Boston)—Hybrid Cactus. Beautiful shade of light pink. The large, well-formed blooms are held erect on long stout stems Each **\$1.00**
 - CHARM (Decorative)—One of the most admired dahlias. A pleasing shade of burnt orange, shading to yellow. Stems good. Free flowering and a good keeper as a cut flower..... Each **\$1.00**

- CHAS. STRATTON** (Chester)—Decorative. Undoubtedly one of the greatest dahlias ever introduced; it is noted for its great size and artistic coloring. Color is pale gold, shaded and tipped with old rose. A tall grower and prolific bloomer; blooms are somewhat fluffy and keep a long time when cut; long, stiff stem. Each \$3.00
- CIGARETTE** (Bessie Boston)—Hybrid Cactus, more vividly colored than Ballet Girl. Best described as creamy white, heavily edged orange, but no two flowers are exactly alike. The petals are long and narrow and inclined to roll. Bloom is large and of good substance. Good stiff stems. Each \$1.50
- DR. MARSHALL A. HOWE**—Decorative; a beauty in form and color; a magnificent large, light pink, edge of petals shading darker; good for exhibition and garden. Each \$1.50
- ETENDARD DE LYON** (Hybrid Cactus)—Carmine purple. Everyone admires this beautiful flower as a garden decoration, because it is a type distinct in shape from the usual. Each 75c
- DR. TEVIS** (Pelicano)—Decorative. A magnificent blossom of a blend of copper, old rose and old gold. Immense flower with the best possible stem. Tall grower and free bloomer. Each 75c
- ELLINOR VANDERVEER** (Seal)—Decorative. An incomparable dahlia of exquisite beauty and great size, having every desirable quality; the large blossoms are of a glowing, satiny, rose pink. The flowers are of great depth and substance, and held far above a tall, sturdy bush, on long stiff stems. Early bloomer. Each \$2.50
- FORDHOOK WHITE** (Burpee)—Peony flowered. A large white. Good habit and free flowering. An excellent garden variety. Each 35c
- GEORGE WALTERS** (Carter)—Hybrid Cactus. A very large soft coral pink, suffused with gold in the center. The plant has splendid growing habits and the flowers are produced in great profusion on good stout stems. Each 75c
- GLADYS SHERWOOD** (Broomall) Hybrid Cactus. A very large cream white flower on a straight stiff stem. A prolific bloom. Each \$1.00
- GRIZZLY, THE** (Burns)—Decorative. The richest deep velvety red dahlia yet produced. The plant is a vigorous grower and the very large, stately blooms are held high on extra stout stems. Does especially well in a warm climate. Each \$1.00
- GLORIANA**—Decorative. Color, pure old gold, intensified by a reddish glow in the center. Exceptionally good, long, leafless stems hold the flowers well above the plants. Each \$1.00
- JEAN CHAZOT OR GAY PAREE** (Cactus)—A French Dahlia which it is a pleasure to grow and recommend. A delightful autumn coloring of golden bronze suffused with nasturtion red. Flower is large and graceful and held erect on long, strong stems. A most beautiful blossom for any use. Especially fine for cutting. Each 75c
- JERSEY'S BEAUTY** (Waite)—A beautiful erosine pink. Decorative of great size, the blooms are carried high above the foliage on long wiry stems, a perfect true pink, wonderful keeper when cut. Probably the most talked of Dahlia today. Each \$1.00
- JERSEY'S RADIANT** (Waite)—A radiant hybrid Cactus of bitter-sweet orange produced on long stiff stems, held well above the foliage. A fine exhibition variety. Each \$2.50
- JUDGE MAREAN** (Marean)—Decorative. An immense flower of changing blends of glowing salmon, pink, red, orange and gold. Free bloomer, long stiff stems. Each \$1.00
- LA TOREADOR** (Marean)—A true type of crimson color, one of the finest of its color ever produced. It is an exceptionally free bloomer, having strong wiry stems, fine for exhibition, as it is a good keeper. One of the best reds we know of in the decorative class. Each \$1.00

- MARIPOSA** (Bessie Boston)—A hybrid Cactus of a delightful shade of true pink which is intensified by a deeper colored center, a faint violet suffusion adding to the effect.....Each **\$1.50**
- MILLIONAIRE** (Stillman)—Decorative. Very large full lavender pink. Immense flower of unusual depth, stands erect on its stems. This is one of the largest dahlias grown.....Each **75c**
- MRS. CARL SALBACH** (Salbach)—Decorative. One of the most successful prize winning dahlias. An immense bloom of a lovely mauve, or mellow pink shading, lighter to the center, and every petal outlined in deep mauve. The stems are extra long and strong, holding their splendid blossoms erect, making it a valuable cut flower.....Each **75c**
- MRS. EDNA SPENCER** (Spencer) Cactus. A splendid example of the American Cactus. The color is exquisite lavender pink. The blooms are of good form and size, coming full to center till late in season.....Each **75c**
- MARY C. BURNS** (Bessie Boston)—Decorative. This is a sensational dahlia which will immediately arrest attention because of its extraordinary coloring. The outside of the petals are old gold and the reverse a dull red. Good stem and free flowering.....Each **\$1.00**
- MRS. I. DEVER WARNER** (Marean)—Decorative. Very large, beautiful flowers of fine form and substance. Color is a rich mauve. Stems long and rigid. Very attractive in the garden and one of the best for exhibition and cutting. We consider it one of the best dahlias on our list.....Each **\$1.00**
- NOBILIS** (Coy)—Decorative. A splendid large bi-colored dahlia, with fine upright stems. The color is a cream white shading to deep crimson at base of petals. In most plants the white predominates.....Each **\$1.00**
- PAUL KRUGER**—Peony flowered. A pleasing blending of red and white with yellow centers. Very profuse bloomer on long stems which stand well above the foliage.....Each **50c**
- PIONEER**—Decorative. A dark mahogany-red with brilliant carmine suffusion on the outer petals; every flower perfect; early and free flowering.....Each **\$1.00**
- PRIDE OF CALIFORNIA** (Lohrmann)—Decorative. A vigorous grower and a very free bloomer. The large deep red flowers are borne high above the foliage on very long, rigid stems, and keep exceptionally well when cut.....Each **50c**
- QUEEN WILHELMINA** (unknown)—Peony-flowered. Another grand waxy white, showing yellow center. Free flowering on long wiry stems.....Each **35c**
- ROSA NELL** (Broomhall)—Decorative. Clear bright rose color, flowers very large, fine for exhibition, good keeper, attracts immediate attention wherever seen.....Each **75c**
- PRINCESS JULIANA**—Decorative. Pure white, flowers are of medium size and form, free flowering and good stems.....Each **35c**
- ROBERT TREAT** (Mueller)—Decorative. This dahlia, similar in color to the American Beauty Rose, is different from any other dahlia in shape or color. Plants are strong growers of branching habit. Flowers 9 to 10 inches in diameter, 4 to 5 inches deep, produced on long straight stems.....Each **\$1.50**
- SAGAMORE** (Badetty)—Decorative. Light apricot buff, shaded with a warm salmon rose and orange buff. A good grower and excellent bloomer. Blooms are highly prized for their color and keeping qualities. Highly recommended.....Each **\$2.50**
- SANHICAN RUBY** (Fisher & Masson)—Decorative. A dahlia of very strong heavy growth with broad dark green foliage; very full, large ruby-red flowers on heavy stiff stems, which bloom close to the foliage. Long stems can only be produced by disbudding.....Each **\$1.00**
- SENORITA** (Lohrmann)—Decorative. Immense blooms of rich dark red, good stem. Another good red which holds its color without fading in warm weather.....Each **\$2.00**

SHUDOWS LAVENDER (Bessie Boston)—Decorative. Very large silvery lavender, shading to white. The stems are perfect and hold the blooms high above the lacy foliage. The lavender becomes deeper late in the season, making the flower very attractive.....Each \$1.50

SNOWDRIFT (Broomhall)—A beautiful white decorative. Very deep built flower, with broad, waxy, pure white petals. The blooms open quickly, remaining perfect for a week. Fine for exhibition.....Each \$1.00

Peonies

Peonies are perfectly hardy, requiring no protection whatever, even in the most severe climate, and once planted, increase in beauty each year.

Planting—Peonies may be planted any time in the Fall, from September 1st until the ground freezes. No Peonies are handled by us in the spring, as that is entirely the wrong time to plant them.

Size of Root—Making a specialty of growing Peonies and Gladioli, our progress depends entirely upon the results obtained from our roots and bulbs; for this reason we quote prices on 3 to 5 eye, or large divisions only.

Important! An important point to observe in the planting of Peonies is not to plant too deep. The roots should be placed so that the eyes are two inches below the surface, and the soil tightly packed about them.

Shipments—Orders from one to three roots can go cheapest by parcel post. We will ship this way if customer will remit with order, ten cents extra for each root ordered. Larger orders should go by express, collect. Excess postage will be returned.

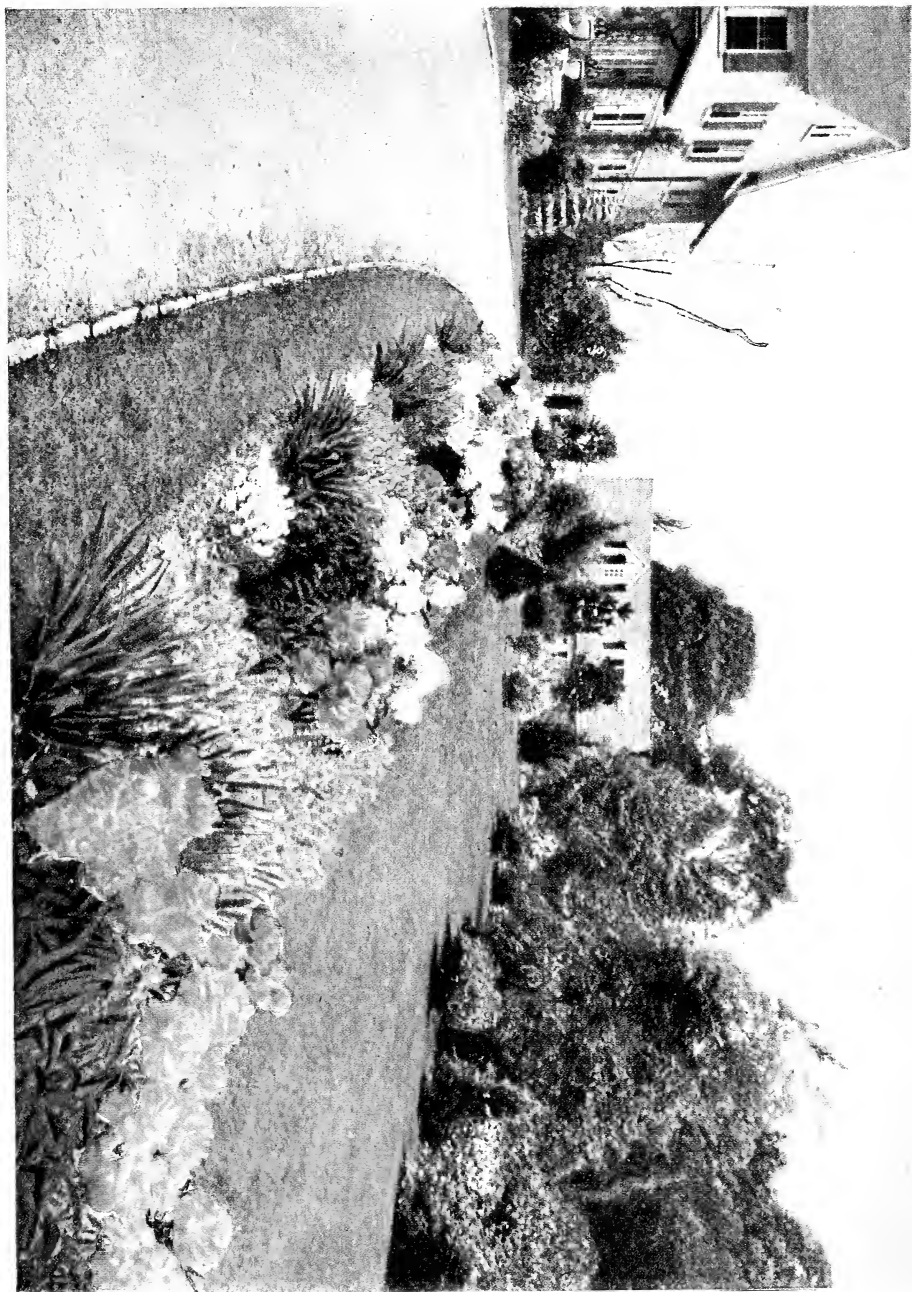
It will be noticed that we are not quoting any Peonies for less than \$1.00 as we cannot grow, care for our stock, dig, pack, label and supply our customers with good, strong plants and make a living profit for less than this amount.

Discounts—On all orders amounting to \$10.00 or more a discount of 10% will be allowed when cash accompanies the order.

VISITORS ARE ALWAYS WELCOME

The figures that follow the variety name denote the rating given by the American Peony Society. The valuation is based on a possible score of ten. Where no rating is shown, the variety is too new to have had sufficient votes to be properly judged.

- ALSACE LORRAINE** (Lemoine) 8.8—White semi-rose type, mid-season, the color of rich creamy white, the center of flower is delicately tinted brownish yellow Each **\$3.00**
- A. M. SLOCUM** (Franklin) 9.0—A white, loosely built flower of rose type, central petal slightly edged crimson. Golden stamens inter-mixed throughout the petals, giving the flower a creamy effect. Good grower. Free bloomer Each **\$7.50**
- ARCHIE BRAND** (Brand) 7.5—A very large flower of even, deep shell pink, with silvery border; mid-season, medium height, profuse bloomer of charming beauty, with delicate rose scent Each **\$1.50**
- ASA GRAY** (Crousse) 8.1—Large compact flower, flesh sprinkled carmine. Total effect, pale pink. Fragrant Each **\$1.50**
- AUGUST VILLAUME** (Crousse) 7.3—Rose. A very large flower of compact globular rose type. An even, rich violet rose color throughout. Fragrant. Late Each **\$1.00**
- AUNT ELLEN** (Brand) 7.6—Large, loose, semi-rose. A fine crimson early free bloomer Each **\$1.00**
- AVALANCHE** (Crousse) 8.7—Very large, compact; globular rose type, pure white with carmine flakes on the edge of center petals; very fragrant Each **\$1.00**
- BALL O' COTTON** (Franklin) 8.8—Rose type, Chaste pure white. Fragrant. Flower resembles Le Cygne very much, but possesses more fragrance. Good grower. A very promising variety Each **7.50**
- BARONESS SCHRODER** (Kelway) 9.0—White plume shaped flower with irregular shaped petals, opens blush changing to pure white. Strong grower and very free bloomer Each **\$1.50**



- BAYADERE** (Lemoine) 8.5—Large, loose, globular flowers. Creamy white with golden heart. Very distinctive. Mid-season..... Each \$4.00
- BENJAMIN FRANKLIN** (Brand) 7.6—Brilliant crimson with dark shading at base of petals; very tall; blooms with great profusion. Medium early. A fine cut flower..... Each \$1.00
- CHESTINE GOWDY** (Brand) 8.4—Shell pink with rich cream color collar. The broad pink petals are splashed with crimson. Medium late. Very fragrant. A striking specimen of the cone shape Peony..... Each \$2.00
- CLEMENCEAU** (Dessert) 8.5—A very late, unusually large, full imbricated blooms. Color, carmine; slightly shaded amaranth with silvery tints and wide silvery border. Flowers open well and is very beautiful. (Originator's description.) Each \$6.00
- COURONNE D'OR** (Calot) 8.1—White large blooms of perfect form, yellow and golden stamens showing between the petals. Very fragrant. A good late white..... Each \$1.00
- DE LACHEI** (De Lachei) 7.1—Late mid-season. Compact rose type. Deep purple crimson reflex. A very sure and free bloomer..... Each \$1.00
- DELLICATISSAMA** (Unknown) 7.6—Very pale lilac rose. Rose type. Very strong, vigorous grower. Mid-season..... Each \$1.00
- DORCHESTER** (Richardson) 7.7—Pale hydrangea pink. Medium tall, upright, free bloomer. One of the latest to bloom..... Each \$1.00
- DUCHESS DE NEMOURS** (Calot) 8.1—Crown type; early: a splendid cup shaped sulphur white flower, with greenish reflex that lights up the entire blossom, which changes to a pure white..... Each \$1.00
- EDULAS SUPERBA** (Lemoine) 7.6—Large, loose flat crowned, bright mauve pink color, mixed light violet shadings. Fragrant. Very strong, upright grower Each \$1.00
- ELIZABETH BARRETT BROWNING** (Brand) 9.0—A fine, pure white of most attractive form and quality. Very soft pink when opening. Outer petals and center marked crimson. Very large, fragrant and good bloomer. Late Each \$5.00
- EUGENE VERDIER** (Calot) 8.3—Light pink with lilac white collar. Large rose type. Extra strong stems. Dwarf habit. Fragrant. Late..... Each \$2.00
- EUGENIE VERDIER** (Calot) 8.6—Pink, semi-rose type, early. Pale pink center deeper, flecked crimson. Very large, flat, tall, strong grower. Fragrant. Mid-season Each \$1.00
- EDWIN C. SHAW** (Thurflow) 9.1—Clear shell pink. Outer petals broad and rounded; sometimes slightly edged crimson. The petals are nearly the same length except the extreme center petals which are short. This gives a very pretty cupped shape and the general effect is one of elegance of form Each \$20.00
- EDW. W. BECKER** (Franklin) 8.5—White, shaded flesh color. A very large, flat flower. Mild fragrance. Free bloomer. A very attractive semi-rose type flower Each \$4.00
- FELIX CROUSSE** (Crousse) 8.4—Large, compact, deep rose red, fragrant, strong grower. Called by many growers the best one-color red in cultivation. Mid-season Each \$1.00
- FESTIVA** (Donkeler) 8.0—White rose type, cream white with crimson spots on some of the petals. Very fragrant; an excellent variety..... Each \$1.00
- FESTIVA MAXIMA** (Meillez) 9.3—Extra large full globular rose type, pure waxy white with bright carmine face on edges of center petals. Very fragrant and a very strong grower, with long stiff stems and very bright foliage Each \$1.00
- FLORENCE NIGHTENGALE** (Brand) 8.1—A magnetic white of pure peerless beauty. One of the world's best either old or new. White with an occasional faint tracing of red..... Each \$1.00

- FRANCIS WILLARD** (Brand) 9.1—Large, perfectly formed flowers with raised center. Opening bluish white with an occasional carmine touch, changing to pure white. Fragrant. One of Brand's best.....Each \$2.50
- FRANCOIS ORTEGAT** (Par) 6.7—Large flower of semi-rose type, dark red showing stamens plant of medium height. Mid-season.....Each \$1.00
- GEORGIANA SHAYLOR** (Shaylor) 8.9—Pink, mid-season, very large flowers with extremely broad petals. Color flesh pink, center of flower white. One of the best productions of Mr. Shaylor.....Each \$4.00
- GOLIATH** (Hollis)—Deep pink. An extra large globular compact rose type, with wide petals. Tyrian rose, slightly tipped silver, fragrant, tall, strong grower, and a free bloomer, mid-season.....Each \$2.00
- GRACE LOOMIS** (Saunders) 9.2—Tall, strong stems bearing very full double flowers of clear white. Late. A fine variety.....Each \$20.00
- GRANDIFLORA** (Richardson) 8.8—Pink, very large flat rose type, bluish white, very fragrant, tall, strong grower, very late.....Each \$1.00
- JEANNOT** (Dessert) 9.2—Large, imbricated, cup shaped flower, perfect in form. Color flesh pink slightly tinged purple and shaded salmon pink at base of petals, changing to silvery white. A variety of exquisite and delicate coloring.....Each \$12.00
- JENNY LIND** (Brand) 7.3—Very large bomb shaped flowers, bright pink with a silvery reflex. Flowers borne in profusion on long stiff stems. Fragrant.....Each \$1.00
- JUBILEE** (Pleas) 7.9—White rose type, mid-season, delicate pink entirely enveloped in a halo of angelic white. A variety difficult to describe.....Each \$3.00
- JUDGE ORR** (Edlund) 1927—Extremely large flat flowers of a beautiful pure pink of the old fashioned Duchess rose; petals long and narrow, giving the flower a feathery effect; plant very sturdy grower with dark green foliage, long stiff stems; fragrant; late.....Each \$25.00
- JUNE DAY** (Franklin) 9.0—Color light flesh, deepening toward center of flower. Rose type. Some of the center petals slightly edged with lavender. Delicate rose fragrance. Extra fine.....Each \$12.00
- KATHERINE HAVEMEYER** (Thurlow) 9.0—Large, rose-type blooms of flesh pink; guard petals broad and rounded, somewhat notched at the ends, center petals narrow and fringed, full high center. Sweet fragrance. Mid-season to late.....Each \$20.00
- KARL ROSENFELD** (Rosenfeld) 8.8—very large globular compact, semi-rose type, dark crimson; very strong, tall and free bloomer. Mid-season. A very brilliant and favorite variety.....Each \$1.00
- KELWAYS GLORIOUS** (Kelway) 9.8—Enormous full blooms of creamy white, with soft blush of rose. Very fragrant. A magnificent variety. Late mid-season.....Each \$18.00
- LADY A. DUFF** (Kelway) 9.1—Lovely French white, central flower of rather flattened circular form and the central petals have a touch of carmine; side flowers come in semi-double saucer shape form, exposing the antlers.
Each \$3.00
- LAKE O' SILVER** (Franklin)—Light pink, silver tipped, golden antlers prominent throughout flower. Central petals darker pink. Large bloom seven to eight inches. Extremely free bloomer and desirable.....Each \$3.00
- LA PERLE** (Crousse) 8.5—Very light pink, blush center, flecked carmine. Very large, cup shaped, compact, fragrant.....Each \$1.00
- LA ROSIERE** (Crousse) 8.3—White large flowers in large clusters, straw color in center, shading to creamy white border, petals imbricated, very free bloomer. Mid-season.....Each \$1.00
- LA TULIPE** (Calot) 7.5—Semi-rose type, late mid-season, enormous globular fragrant flowers, delicate, bluish white shading to ivory white, with red tulipe markings on outside of guard petals, very beautiful in the bud.
Each \$1.00

- LE CYGNE** (Lemoine) 9.9—White rose type, mid-season, with good stiff stems and very large globular tight blooms. Petals very much incurved and fragrant. Finest of its color.....Each \$10.00
- LIVINGSTONE** (Crousse) 8.1—Very large compact, perfect rose type, beautiful soft lilac rose, with silver tips, center flaked carmine, odorless, strong grower of medium height, free bloomer; late; an extra good one.....Each \$1.00
- LONGFELLOW** (Brand) 9.0—Very large flower of a brilliant cherry crimson. One of the best red peonies in existence. Good bloomer.....Each \$4.00
- LYNDA** (Brand)—A loose tuft of fringed bluish white, petals surrounded by many finely fringed petals of deep cream.....Each \$1.00
- MABEL L. FRANKLIN** (Franklin) 9.0—Outer petals light pink toward center of flower. Short, creamy petals intermingled near the crown of the flower add greatly to its beauty. Inner petals slightly edged with lavender. Delightfully fragrant. This is one of Mr. Franklin's best originations and a prize winner. A splendid acquisition to any collection.....Each \$7.50
- MARY LOU KIMMEY** (Edlund) 1927—Light pink, rose type, very full flowers with yellow stamens among petals, splashes of carmine on central petals. Stiff upright stems and very tall; mid-season.....Each \$25.00
- MARGUERITE GERARD** (Crousse) 8.4—Large compact, semi-rose type, very pale, hydrangea pink, fading to nearly white, center petals minutely flaked dark carmine, very strong, medium height, free bloomer, late; an extra fine varietyEach \$1.00
- MARIE LEMOINE** (Calot) 8.5—Pure white with cream white center. Large, very compact, rose type, fragrant, medium height. Extra strong stems. Very lateEach \$1.00
- MARTHA BULLOCH** (Brand) 9.1—Mammoth cup-shaped blossoms, often nine to twelve inches across. The largest of the good Peonies, soft rose pink. Tall, strong grower, well formed, good substance, exquisitely beautiful and fragrant. LateEach \$10.00
- MARY BRAND** (Brand) 8.7—Flowers very large; semi-rose type. A profuse bloomer. The best dark red Peony in cultivation. Has no equal as a cut flowerEach \$2.00
- MARY P. KING** (Franklin) 8.7—A light coral pink; deepening toward center of bloom. Center petals delicately margined with lavender. A prolific bloomer and good multiplier. Mild and pleasing fragrance. A charming flower. Each \$5.00
- MIREILLE** (Crousse) 7.7—White, large compact, globular, rose type, milk white. Center petals very large and distinctly edged dark crimson. Fragrant. Tall, strong grower. Very late. Good.....Each \$1.00
- MME. DE VERNVILLE** (Crousse) 7.9—Pure white center, tipped carmine. Very large, full bomb shape, medium height. Strong grower. Very free bloomer. FragrantEach \$1.00
- MME EMILE GALLE** (Crousse) 8.5—Pink, large compact, flat rose type, delicate shell pink with touches of heliotrope and lavender, medium tall, strong free bloomer, fine in the bud. Late.....Each \$1.00
- MME. EMILE LEMOINE** (Lemoine) 8.9—White semi-rose type, mid-season, large opening into very large imbricated round blossoms that completely cover the plant. Each petal overlapping the other on first opening; a glossy white with a sheen of satin pink, covered with lilac dots. When fully opened, it is a pure white.....Each \$1.50
- MME. GAUDICHAU** (Millet) 8.2—Next to M. Martin Cahuzac this is the darkest Peony in the world, and it has the distinguishing characteristic of having the most beautiful and luxuriant foliage of any Peony in our collection Each \$6.00
- MIDNIGHT** (Brand) 7.3—The black Peony, large, very deep maroon, semi-rose, plume shaped flower, medium early.....Each \$1.00

- MME. JULES DESSERT** (Dessert) 9.4—One of the finest of all the Peonies. The flowers are very large with broad petals. The color is a beautiful white, tipped with a very delicate pink and splashed with carmine, showing a few golden stamens which make a beautiful flower.....Each **\$3.50**
- MIKADO** (Barr) 8.6—A lilac purple, center yellow. Japanese type. Medium size in height. Mid-season.....Each **\$2.00**
- MRS. CHAS. S. MINOT** (Minot) 9.2—Rather dwarf plant with stiff stems and dark green foliage. Very large flowers, finely formed, with broad petals. Guard petals faint shell pink, center of creamy white with golden lights at base of petals. A few splashes of crimson are apparent in some flowers. Late Each **\$35.00**
- MRS. EDWARD HARDING** (Shaylor) 9.9—A charming French white of very large size. Rare, elegant and aristocratic. Desirable in every way. One of the best of the newer originations.....Each **\$15.00**
- MRS. J. V. EDLUND** (Edlund) 1927—We believe this to be one of the largest white Peonies in cultivation. A very tall plant with long stiff stems and dark green foliage; very large pure white flowers finely formed, with waxy broad petals without a trace of any other color. Fragrant and very late Each **\$50.00**
- MONS. DUPONT** (Calot) 8.3—An immense perfectly formed cup-shaped flower. Opening flat when in full bloom; glistening ivory white center petals bordered with lively carmine, golden stamens mingled with petals throughout the flower; fragrant.....Each **\$1.00**
- MONS. JULES ELIE** (Crousse) 9.2—Very large, compact bomb type. large guard petals surrounding a great dome of incurved petals; glossy flesh pink shading to a deeper rose at the base. The entire bloom covered with a silver sheen. Fragrant.....Each **\$1.50**
- MONS. MARTIN CUHAZAC** (Dessert) 8.8—Rose, semi-rose type, mid-season; large, full, massive, well formed flowers; perfect, solid balls of deep maroon with garnet hues and brilliant luster; good, erect habit, free bloomer.Each **\$2.50**
- MONT. BLANC** (Lemoine) 8.6—White, very large globular bloom, compact creamy white, slightly tinged rosy white. Early mid-season; fragrant.Each **\$2.50**
- OFFICINALIS RUBRA PLENA**, 8.6—Double bomb shaped flowers of bright blood red with no trace of purple. The old-fashioned red Piney.....Each **\$1.00**
- OPAL** (Pleas) 8.5—Pink, rose type, mid-season, vigorous tall growing plant. profuse bloomer, guard petals delicate pink.....Each **\$2.00**
- PHILIPPE RIVOIRE** (Rivoire) 9.2—A very fine bright crimson, of good form and growth. The most fragrant of the red Peonies. Mid-season. Very scarce Each **\$15.00**
- PHOEBE CAREY** (Brand) 8.8—Large flat rose type flower. Color soft lavender pink with center several shades darker. Tall, strong, very fragrant and lateEach **\$6.00**
- PIERRE DESSERT** (Dessert) 7.2—Large medium compact, semi-rose type; a bright crimson plant of medium height, strong profuse bloomer.....Each **\$1.00**
- PONEMAH** (Franklin)—Even shade of most beautiful pink shading to lighter pink at edge of petals. Flower opens flat and of enormous size. Central petals lacinated. Outer rows of petals broad. Delightfully fragrant. Sturdy grower and bloomer. (Originator's description).....Each **\$4.00**
- PRESIDENT WILSON** (Thurlow) 9.3—Shell pink with flesh tints in center. Very large. Extra fine.....Each **\$35.00**
- PRIDE OF ESSEX** (Thurlow) 8.9—Exceptionally broad petals of deep flesh pink, making a very large flower of good form. Stems long and stiff. Mid-season; a very desirable variety.....Each **\$8.00**

- PRIMEVERE** (Lemoine) 8.6—Large flat flower. Outer petals buff; center sulphur yellow. Tall, strong and free bloomer. Very fragrant; mid-season. Nearest approach to a yellow Peony..... Each \$2.50
- RACHEL** (Terry) 7.9—Medium size; semi-rose type; a bright crimson; plant of medium height; strong profuse bloomer..... Each \$1.00
- RED BIRD** (Franklin) 8.6—Bomb type, outer guard petals rose red, central petals lacinated and of a darker shade. Fragrant..... Each \$2.50
- RICHARD CARVEL** (Brand) 8.8—Immense globular bomb flowers, bright, all one shade of crimson; guard petals large, broad and prominent. Early, tall, very stout stems, profuse bloomer..... Each \$4.00
- REINE HORTENSE** (Calot) 8.7—Syn. Pres. Taft. Very large, compact, semi-rose type. Color light shell pink, center flecked crimson. Tall, strong, stiff stems, fragrant, mid-season variety..... Each \$2.00
- ROSE HERE** (Brand)—A dark rose, solid color; seed pods green tipped white. Two rows of guard petals; wide and narrow petals in' the center. Very attractive Each \$1.00
- RUBRA SUPERBA** (Richardson) 7.2—Rose type; very late; a beautiful dark crimson without stamens. A large, full fragrant flower. A rather shy bloomer until well established..... Each \$1.00
- RUTH BRAND** (Brand) 8.1—Very large compact bomb, guard petals prominent, enclosing a grand ball of compact center petals; soft lavender pink, splashed with deep lavender. Mid-season..... Each \$1.50
- SARAH K. THURLOW** (Thurlow) 9.1—Large size, broad, rounded guard petals of flesh white or pearly white, with deeper heart of soft blush with faint salmon shades. Fragrant. Stiff stems and good foliage..... Each \$20.00
- SARAH BERNHARDT** (Lemoine) 9.0—Large and fine texture. Apple blossom pink. Silver tipped petals. Very fragrant. Late, mid-season..... Each \$2.00
- SILVIA** (Saunders) 8.7—Light pink, semi-double, lighter towards the center. A very finished and decorative variety. A great bloomer. Rather dwarf and early. One of the very good new introductions..... Each \$20.00
- SISTERS ANNIE** (Brand) 7.4—Large semi-rose ground color; a delicate pink, heavily suffused with a deep rose, edge of petals fringed; a beautiful flower of the deep flat type, with stamens showing among the petals. Tall, stout stems. Mid-season Each \$1.00
- SOLANGE** (Lemoine) 9.7—Cream rose type, mid-season; full globular flower with a compact crested tuft in center; color is a deep orange salmon overlaid with a delicate tender reddish brown..... Each \$5.00
- SOUVENIER DE LOUIS BIGOT** (Dessert) 9.1—A very large convex bloom with imbricated petals; color a brilliant bengal rose slightly tipped carmine at the base turning to a salmon pink..... Each \$4.00
- STANDARD BEARER** (Hollis) 8.5—Rose, a high built globular compact flower. Extremely large, color a uniform light pink. Strong stems; free bloomer. Very fragrant and early..... Each \$7.50
- SUZETTE** (Dessert) 8.0—Bengal rose, mixed with golden stamens. Medium size; strong, stout stems. Mid-season..... Each \$1.50
- TENUIFOLIA FLORE PLENA**—This is a very early species of Peony which has moss-like foliage and which carries one very bright red, double, rose shaped bloom on every stem. It is the earliest of all Peonies which always blooms before Decoration Day in Minnesota..... Each \$2.00
- THERESE** (Dessert) 9.8—Rose type, flowers of enormous size, in quantities on long stout stems. Color the most delicate rich satiny pink with glowy reflex. Mid-season Each \$4.00
- TOURANGELLE** (Dessert) 9.4—Very full, large, flat rose type flower. Flesh pink and salmon; strong grower; free bloomer. Late mid-season. A very desirable variety..... Each \$3.00

- TRIOMPHE DE L'EXPOSITION DE LILLE** (Calot) 7.8—Large, compact, rose type. Pale pink, splashed with a darker tint; dwarf, fragrant, mid-season Each **\$1.00**
- VENUS** (Kelway) 8.3—Very large, delicate shell pink. Tall, free bloomer. Very fragrant. Mid-season..... Each **\$1.00**
- VICTOIRE DE LA MARNE** (Dessert) 8.3—A very attractive globular bloom of great size. Velvetish amaranth red, with silver reflex. A real show flower Each **\$5.00**
- WALTER FAXON** (Richardson) 9.3—Rose. Medium size of globular shaped flower, pure bright rose, deepening toward the center. Very distinct and delicate color. Tall, free bloomer. An outstanding variety in any collection Each **\$4.50**
- W. F. CHRISTMAN** (Franklin) 8.8—Color flesh pink. No stamens visible. An exceedingly attractive flower and delightfully fragrant. Outer guard petals broad and of splendid substance. Central petals narrower and lacinated. Full rose type. A strong grower and sure bloomer. Highly recommended Each **\$6.00**
- WM. PENN** (Brand) 7.9—Immense compact, semi-rose type; color light rose, changing to a more delicate rose at edge of petals. Edge of petals notched; plant of medium height; strong grower; lavish bloomer.....Each **\$1.00**

